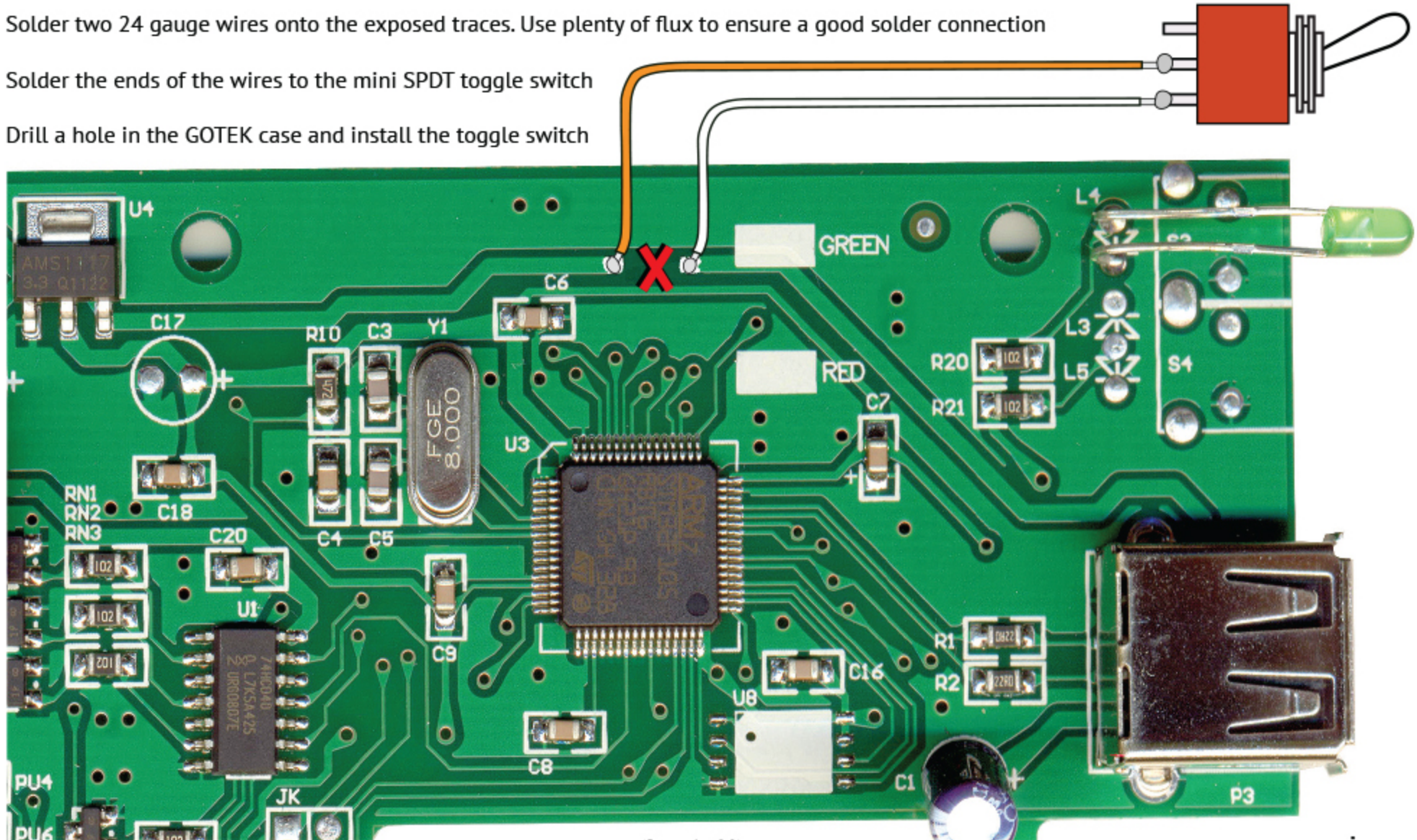


USB CONNECT/DISCONNECT MOD FOR USB FLOPPY DRIVE EMULATOR

NOTE: Images and instructions are for GOTEK P/N: SFRM72-FU-DL. However, similar model GOTEK's might also work

- 1) Cut the trace at the area marked by the red "X"
- 2) Scrape off two 3mm sections of the top layer to expose the copper traces below
- 3) Solder two 24 gauge wires onto the exposed traces. Use plenty of flux to ensure a good solder connection
- 4) Solder the ends of the wires to the mini SPDT toggle switch
- 5) Drill a hole in the GOTEK case and install the toggle switch

IF YOU HAVE INSTALLED FLASHFLOPPY OR HxC FIRMWARE, DO NOT USE THIS MOD. IT'S ONLY FOR FACTORY FIRMWARE.



There's already a dimple in the exact location to drill a hole for the mini-toggle switch!

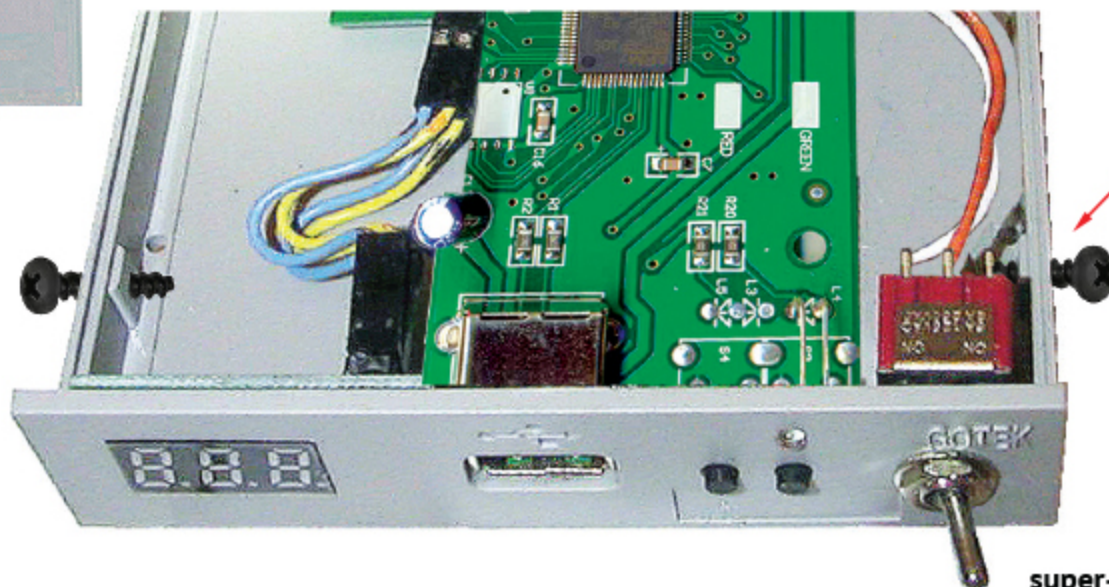
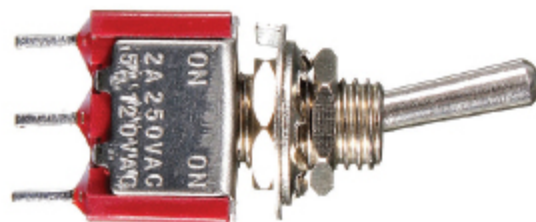
Mini-toggle switches are available in different sizes. Be sure to measure before drilling a hole. Check for proper clearance between the PCB and the right side of the case. Also, it needs to have a low profile otherwise the upper lid won't close. The mini-toggle switch I used from taydaelectronics.com was a perfect fit. Depending on how it's mounted, the actuator can be moved in either direction... UP/DOWN or LEFT/RIGHT. Ensure the wires on the toggle switch do not interfere with the bracket mounting screw on the right side



SPDT MINI TOGGLE SWITCH (ON-ON)

Tayda SKU#: A-4567

\$0.47



Special thanks go out to Stan E., a frequent visitor of the S-50/S-550 website. My original solution used a 3PDT switch, a USB connector, Epoxy and a ton of time. He suggested this new solution which uses a solitary SPDT switch. It's now 100x easier!!